








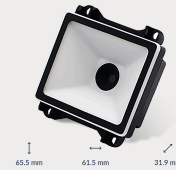




EM20-80 V2

Scan Engines

 1D & 2D	 CMOS	 CPU	 Dual Interface	 EasySet	 Mobile Reading
 Standard	 Warranty 2 Years	 White Illumination			



Features

6th Generation UIMG Technology.

The EM20-80 is armed with Newland's latest generation scanning technology. Sporting a new decoding algorithm on its CPU processor, the engine delivers excellence no matter what code it's facing. Additionally, it allows the firmware to be adapted to your specific environment and application.

Optimized for On-Screen Codes.

The EM20-80 is ready for any smartphone or tablet presented to it. The wide scan angle and optimization for near-distance scanning both match the intuitive way end-users present their device to a scanner. This keeps lines moving and operations running smoothly.

Resistance to High Vibrations.

The sturdy PCB construction and vibration-proof connectors make the EM20-80 highly resistant against vibrations. This feature has particularly proven its value for ticket validation in buses and trains.

Direct Connection to PC.

The EM20-80 is set up with an additional 4-pin connector on its decoder board. This way, you can directly connect the engine to your computer via a universal USB interface.

EasySet Configuration.

The EM20-80 is compatible with our master configuration software EasySet. Built for Windows OS, this software is a useful tool to integrators for building and testing configurations, cloning and deploying configurations, and updating scanner firmware.

2 Years Full
Warranty



TECHNICAL SPECIFICATIONS

EM20-80 V2

Data Capture

1D	All major 1D symbologies, including EAN-8, EAN-13, UPC-E, UPC-A, Code 128, UCC/EAN128, I2Of5, ITF-14, ITF-6, Matrix 25, CodaBar, Code 39, Code 93, ISSN, ISBN, Industrial 25, Standard 25, Plessey, Code11, MSI-Plessey, UCC/EAN Composite, GS1 Databar, Code 49, Code 16K.
2D	All major 2D symbologies, including PDF 417, QR Code, Micro QR, Data Matrix, Aztec, Maxicode, Chinese Sensible Code, GM Code, Micro PDF417 Code, Code One.
Depth of Field DataMatrix (10mil)	35 mm - 50 mm

Depth of Field EAN 13 (13mil)	25 mm - 110 mm
Depth of Field PDF417 (6.67mil)	35 mm - 45 mm
Depth of Field QR (15mil)	0 mm - 90 mm
Field of View Horizontal	68°
Field of View Vertical	51°
Illumination	White LED
Image Sensor	640 x 480 CMOS
Minimal Print Contrast	30%
Scan Angle Pitch	±40°
Scan Angle Roll	360°
Scan Angle Skew	±45°

Physical

Current @ 3.3VDC Operating	141 mA
Current @ 3.3VDC Standby	93 mA
Current @ 5VDC Standby	51 mA
Dimensions	61.5(W) x 65.5(D) x 31.9(H) mm
Input Voltage	12-pin FPC connector: 3.3-5 VDC ±5%, 4-pin box connector: 3.3-5 VDC ±5%
Interfaces	USB, RS-232, TTL-232
Notifications	Beep, Green LED
Power Consumption	3.3 VDC: 466 mW, 5 VDC: 755 mW (typical)
Weight	33 g

Environmental

Ambient Light	0 to 100,000 lux (natural light)
Humidity	5% to 95% (non-condensing)
Operating Temperature	-40°C to 60°C (-40°F to 140°F)
Storage Temperature	-40°C to 75°C (-40°F to 167°F)

Software

Configuration Tools	EasySet
---------------------	---------

Certifications

Certifications Hardware	CE EMC Class B, FCC Part 15 Class B
-------------------------	-------------------------------------

Warranty

Warranty Standard	2 Years
-------------------	---------

Accessories

Accessories Optional	USB cable, RS-232 cable, Adapter
Accessories Standard	180mm flexible flat cable (FFC), Software development board

Accessories

Cables

CBL034U USB to Micro USB Cable for EM20 and MT90 (CBL034U)

CBL115U 4-PIN to USB Cable for EM20-80 (CBL115U)

CBL124R 4-PIN to USB/RS232 Cable for EM20-80 V2 (CBL124R)

Protection & Handling

EM20-TG Tempered Glass Window for EM20-80 (EM20-TG)

Newland AIDC EMEA

Feel free to contact us or a partner near you.

info@newland-id.com - newland-id.com

Specifications are subject to change without notice

© Newland AIDC EMEA 2026 - All rights reserved