



EM27

Scan Engines



1D



2D



CMOS



CPU



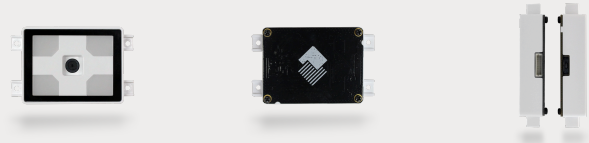
Dual
Interface



EasySet



Warranty
2 Years



Features

6th Generation UIMG Technology

The EM27 is armed with Newland's latest-generation scanning technology. Sporting a new decoding algorithm on its CPU processor, the engine delivers excellence no matter what code it's facing. Additionally, it allows the firmware to be adapted to your specific environment and application.

Optimized for On-Screen codes

The EM27 is ready for any smartphone or tablet presented to it. The wide scan angle and optimization for near-distance scanning match the intuitive way end-users present their device to a scanner. This keeps lines moving and operations running smoothly.

Super Slim Form Factor

As Newland's smallest customer-facing scanner yet, the EM27 is perfect for integration into slim, modern designs.

EasySet Configuration.

The EM27 is compatible with our master configuration software EasySet. Built for Windows OS, this software is a useful tool to integrators for building and testing configurations, cloning and deploying configurations, and updating scanner firmware.

2 Years Full
Warranty



TECHNICAL SPECIFICATIONS

EM27

Data Capture

1D	Code 128, UCC/EAN128, AIM128, EAN-8, EAN-13, ISSN/ISBN, UPC-E, UPC-A, Interleaved 2 of 5, ITF-6, ITF-4, Standard 25, CodaBar, Industrial 25, Code 39, Code 93, Code 11, Plessey, MSI-Plessey, GS1-128 (UCC/EAN-128), GS1-Databar™ (RSS) (RSS14, RSS-Limited, RSS-Expand, Matrix 2 of 5)
2D	PDF 417, Micro PDF 417, QR Code, Micro QR, Data Matrix, Aztec, Maxicode
Depth of Field Code 39 (5mil)	25 mm - 70 mm
Depth of Field DataMatrix (10mil)	35 mm - 60 mm
Depth of Field EAN 13 (13mil)	40 mm - 90 mm
Depth of Field PDF417 (6.67mil)	32 mm - 55 mm

Depth of Field QR (15mil)	15 mm - 75 mm
Field of View Horizontal	68°
Field of View Vertical	51°
Illumination	White LED
Image Sensor	640 x 480 CMOS
Minimal Print Contrast	25%
Motion Tolerance	1.0 m/s
Scan Angle Pitch	±60°
Scan Angle Roll	360°
Scan Angle Skew	±60°

Physical

Current @ 5VDC Operating	196 mA (typical), 616 mA (max)
Current @ 5VDC Standby	35 mA
Dimensions	With foam: 55.0(W) x 34.4(D) x 13.2(H) mm, With glass: 55.0(W) x 34.4(D) x 12.7(H) mm
Input Voltage	5 VDC ±5%
Interfaces	USB, RS-232
Notifications	Beep
Power Consumption	980 mW (typical)
Weight	With foam: 14.2 g, With glass: 17.9 g

Environmental

Ambient Light	0 to 100,000 lux (natural light)
Humidity	5% to 95% (non-condensing)
Operating Temperature	-20°C to 60°C (-4°F to 140°F)
Storage Temperature	-40°C to 70°C (-40°F to 158°F)

Software

Configuration Tools	EasySet
---------------------	---------

Certifications

Certifications Hardware	CE EMC Class B, FCC Part15 Class B, RoHS
-------------------------	--

Warranty

Warranty Standard	2 Years
-------------------	---------

Accessories

Accessories Optional	USB cable, RS-232 cable
----------------------	-------------------------



Newland AIDC EMEA

Feel free to contact us or a partner near you.
info@newland-id.com - newland-id.com

Specifications are subject to change without notice
© Newland AIDC EMEA 2026 - All rights reserved